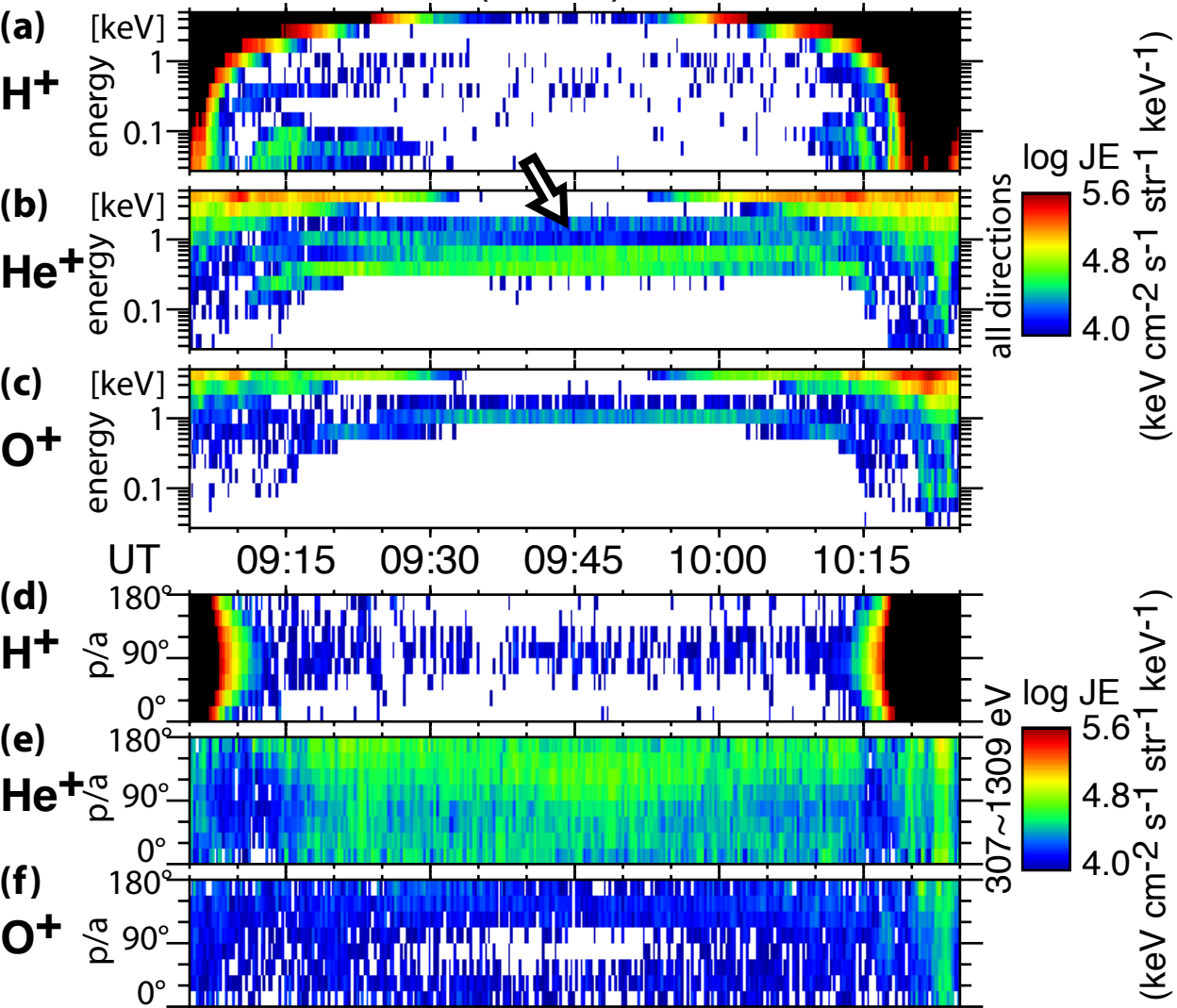


CIS/CODIF (SC-4) , 2001-3-19



Dist	4.2	4.1	4.0	4.1	4.2
L	4.8	4.1	3.8	4.1	4.8
ILat	-63.0	-60.4	59.3	60.2	62.8
MLT	23.2	23.0	22.9	22.7	22.5
Zgsm	-2.0	-1.1	-0.1	0.8	1.7
Zqse	-2.1	-1.3	-0.4	0.5	1.4